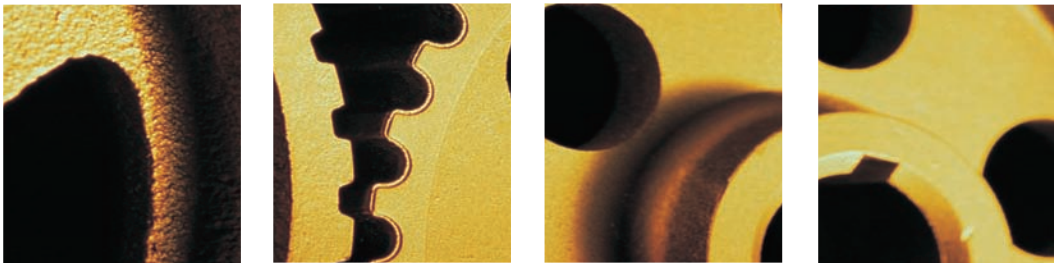
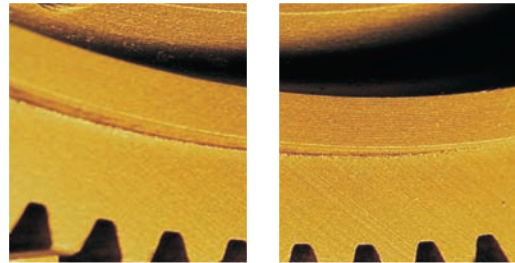


*Metal has never
been so flexible.*



See the latest in
Italian machine tool
technology
@ **IMTS**

chicago2004

September 8-15
McCormick Place



Italian Trade Commission
Government Agency



UCIMU - SISTEMI PER PRODURRE
Italian Machine Tools, Robots and
Automation Manufacturers' Association

Burkhardt+Weber Fertigungssysteme GmbH (Gruppo Riello Sistemi)

Burkhardt+Weber Str. 57
72760 Reutlingen Germany
Tel: 011/49/7121/3150
Fax: 011/49/7121/315104
E-mail: info@burkhardt-weber.de
www.burkhardt-weber.de

Booth: A-8586

South Building

BURKHARDT + WEBER
FERTIGUNGSSYSTEME

Located near Stuttgart in the very heart of the German mechanical precision area, Burkhardt + Weber Fertigungssysteme GmbH manufactures high accuracy machining centers, production cells, special machines specifically designed for producing small or large volume accuracy components of cast and steel since 1888.

Approximately 200 employees are currently engaged in the premises in Reutlingen standing on 420,000 sq. feet, of which 160,000 sq. feet are covered. The high quality standards of its production are the result of hard work of well trained and skilled personnel, of constant innovation and improvements.

To maintain its leadership on the market, Burkhardt + Weber has adopted a company policy that guarantees the quality standards implied by ISO norms which led to achieving ISO 9001: 2000.

The know-how acquired throughout the long experience, the dynamic management, the continuous trend in reaching product perfection and finding innovational solutions allow BW to strengthen its leadership especially in the automotive and general metal cutting industry.



*The innovative
MCX 750 for
reliable and cost
effective machining
operations.*

CAORLE Costruzioni Meccaniche SpA

Via Gorizia, 8
36035 Marano Vicentino (VI) Italy
Tel: 011/39/0445/697520
Fax: 011/39/0445/697550
E-mail: globe@caorle-spa.com
www.caorle-spa.us

U.S. Contact:
CAORLE US Corp.
1636 Todd Farm Drive
Elgin, IL 60123
Tel: 847/697-7705
Fax: 847/697-7715
www.caorle.us



UCIMU-SISTEMI PER PRODURRE
MEMBER COMPANY

The founder of Caorle hails from a family of mechanic sub-contractors. In the 1960s, he pursued the production of hydraulic end working machines.

Since its beginnings as a builder of metal cutting machines, Caorle never ceased fine-tuning its development of machines, always keeping an eye focused on mechanic/electronic technology and the other eye on customers' needs.

In today's market, Caorle offers a wide range of end working machines and CNC multiaxis (#3+3 NC axis) machining centres for extremities with automatic loading/unloading facilities, tool presence control, etc.

In Europe and the United States, Caorle is known for its customized solutions.

Caorle offers options that allow machines to standalone or to be used as part of an integrated cell (e.g., together with a robot and lathe).

Pictured is Caorle model CM152-T12 with automatic loader/unloader units and offered with a user-friendly software unit (CNC also available). This model is designed with two opposed, independent machining headstocks (spindle ISO50 + 12 seats tool changer); each one displaced on two CNC axis (longitudinal [Z] and transversal [X]). Caorle's basic model has a capacity of Ø 6 inches (150 mm) and length of 59 inches (1,500 mm).

Caorle is present in the United States with Caorle Corp.



Model CM152-T12

Colgar SpA

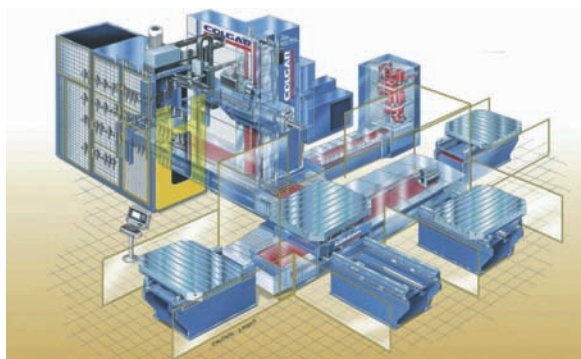
Via Marconi, 63
20010 San Pietro all'Olmo (MI) Italy
Tel: 011/39/02/936151
Fax: 011/39/02/93615278
E-mail: sales@colgar.it
www.colgar.it
Contact: Mr. Alberto Viganò

U.S. Contact:
Pilsen Import, Inc.
3985 Virginia Avenue
Cincinnati, Ohio 45227
Tel: 513/271-3380
Fax: 513/271-8629
E-mail: info@pilsenimports.com
www.pilsenimports.com
Contact: Mr. Pete Borden

COLGAR



Founded in 1945 with a large production of floor type boring and milling machines, "T" type boring and milling machines, vertical gantry type boring and milling machines, rotary traverse table, twist and index head up to 6000 r.p.m. All the machines and their parts are completely manufactured in S. Pietro all'Olmo. The flexibility is our success and customers are our partners.



Boring and milling machine with 2 or more pallet station, full options with boring bar and twisting or index head up to 6000 r.p.m, tool changer, TOP (telediagnostic operator program), Tool Plus.

Delfer Srl

Via Aosta, 22
10092 Beinasco (TO) Italy
Tel: 011/39/011/3971620
Fax: 011/39/011/3499779
E-mail: delfer@delfer.it
www.delfer.it

DELFER

Manufacturer of indexable cutters and carbide inserts since 1959. 60% of our total production is exported to all of the European countries, the Far East (Japan, Korea, Taiwan, etc) and to the U.S.A.

In particular we would like to point out our mold makers line:

MILLCOP MG (left image)

- used for machining from the solid, copying roughing operations, regardless of width. The particular insert geometry and wide flute area make for excellent chip removal.

MILLCOP cutter is available in the following standard diameters: 1.000-1.250-1.500-2.000 with WELDON and MORSE shank.

MILLCOP Ø 1.000 and Ø 1.250, due to the two cutting edges, which arrive into the center, permit double feeds compared to the other cutters presently available in the market, make easier the machining from the solid.

MILLCOP Ø 1.500 and Ø 2.000 use high thickness inserts (6 mm) determining the radius, which allows double feeds; use inserts with two cutting edges, therefore there is a high management cost reduction.

TORIDEX (center image)

- used for face-milling, profile milling, slot milling, peripheral milling, copy milling, ramp-milling and drilling. Toridex mount precision and utility round inserts, the particular cutting geometry allows to work in the same time with axes "y-z" or "x-z", giving to the end-user the possibility to arrive to the semi-finishing of the mould requested with only one typology of cutter. About the inserts, there is a wide range of uncoated and coated carbide grades that permit to the end-user an efficient machining in most materials.

COPIDRILL CD (right image)

- used in finishing and semi-finishing copying operations and the cutter body never interferes with the sides of the workpiece. Thanks to the close tolerances of the cutter body, the screw and the insert, it is possible to get copying with very close tolerance limits (+/- 0.02 mm). The two cutting edges provide to a constant working load on the insert and permit double feed.



Diplomatic Automazione SpA

P.le Bozzi 1
20025 Legnano (MI) Italy
Tel: 011/39/0331/472216
Fax: 011/39/0331/455161
E-mail: duploaut@diplomatic.com
www.diplomatic.com

U.S. Service Center:
MACOSER INC
Metal & Automation
2747 Interstate Street
Charlotte, NC 28208
Tel: 704/392-0110
Fax: 704/394-0410
E-mail: danb@macoser.com

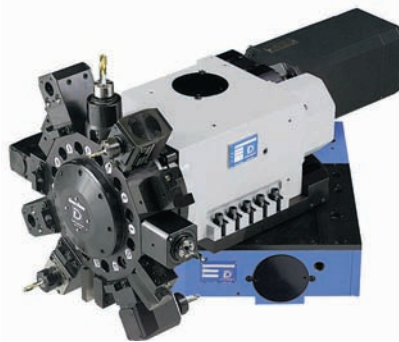
Booth: D-4694

Lakside Center



Diplomatic was founded in 1952 and today produces a large range of advanced tool turrets and accessories for CNC lathes including the new generation of hydraulically and pneumatically operated servomotor turrets, driven tool systems with one or two motors, and Y axis and B axis for multi tasking applications. The acknowledged functionality and reliability of our products has earned us the appreciation of the major CNC lathe manufacturers worldwide.

*SMBR radial driven
tool servomotor turret
on B axis*



Giuseppe Giana SpA

Via Manciatelli, 22
20020 Magnago (MI) Italy
Tel: 011/39/0331/657380
Fax: 011/39/0331/306460
E-mail: giana@giana.it
www.giana.it



UCIMU-SISTEMI PER PRODURRE
MEMBER COMPANY

Giuseppe Giana has been active in the machine tool business for more than 40 years. The constant updating, the acquired technical knowledge and the application of mechanical and electronic techniques have contributed to the success of our company over the years, in Europe and all over the world. Our manufacturing range involves CNC-controlled Center lathes with either two (GGL) or four (GGH) bed guideways and Deep-hole boring machines (GGB) equipped with CNC but also versions without computerized controls. Our machines offer highest performances in the industrial field. As a matter of fact, our technical design offers machinery of the highest technical contents. The premises of Giuseppe Giana SpA total 30,000 sqm, of which 10,000 sqm are occupied by industrial buildings. For our own jobs, our company has a very modern machine-tool park of medium and big-sized models, among which is one of the biggest surface grinding machines existing in Europe.

Our production includes:

CNC Lathes:

Two bedways type GGL 650, GGL 900, GGL 1200; Four bedways type GGH 1100, GGH 1400, GGH 1800, GGH 2300, GGH 2800; Turning length up to mm 20000 - Higher capacity on request.

Deep hole boring machines:

Type GGB 360, GGB 560, GGB 1200, GGB 2500; Numerical control GGB are particularly used in the aircraft industry, in order to carry out internal drillings with shaped sections. Boring capacity up to mm 1000; Boring depth up to mm 20000 - Higher capacity on request.

*Deep Hole Boring Machine
GGB 2500 CNC 1020 x 8000*



IMAS Transfer SpA

Viale Lombardia, 78
22066 Mariano Comense (CO) Italy
Tel: 011/39/031/757311
Fax: 011/39/031/752002
E-mail: comm.@imastansfer.com
www.imastansfer.com

U.S. Contact:
Imas Transfer USA, Inc.
1061 E. Main Street, Suite 200
East Dundee, IL 60118
Tel: 847/836-6892
Contact: Sergio Scotti

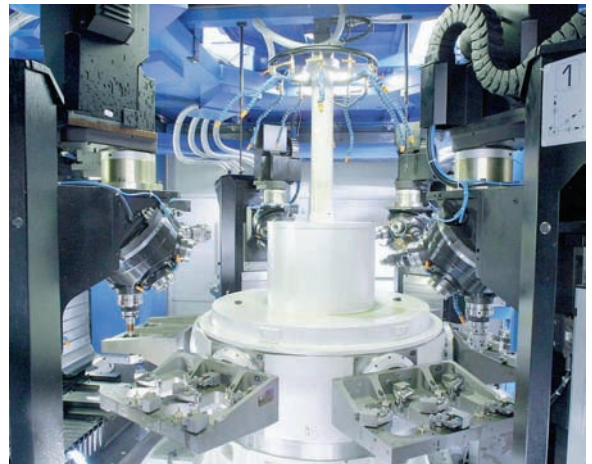
Booth: A-8485

South Building



UCIMU-SISTEMI PER PRODURRE
MEMBER COMPANY

*Inside of a typical
Imasflex 300, rotary-
table fully flexible
production system*



I-TECH Int'l Corp.

Grinding & Manufacturing Solutions

231 West Parkway
Pompton Plains, NJ 07444
Tel: 973/248-0099
Fax: 973/248-0950
E-mail: info@itechcorp.us
www.itechcorp.us

Booth: B-7550

North Building



I-TECH Grinding & Manufacturing Solutions combine the best grinding and manufacturing technologies for the automotive and aerospace industries. I-TECH Grinding & Manufacturing Solutions is a division of I-TECH International Corp., a machine tool and accessories sales/service company which is based in the United States and Italy and is wholly owned in partnership by the highest quality Italian machine tool builder.

In North America we represent:

- Rettificatrici Ghiringhelli: Automated and Turnkey Centerless Grinding Systems
- Tacchella Macchine: O.D. & I.D. CNC Cylindrical Grinding Machines
- Rosa Ermando: Surface and Creep-feed CNC Grinding Machines
- Ort Italia: Two and Three Roll Thread, Spline and Form Rolling Machines
- Tecnologie FRB: Face Drivers & Live Centers for Grinding, Turning and Gear Cutting Machines

Other partners include:

- Losma: Air Mist Filtration and Liquid Filtration for Machine Tools
- Balance Systems: Balancing Equipment for Machine Tools and Balancing Machines
- Rollon: Linear Guides

I-TECH Corp. website home page



Losma SpA

Via E. Fermi, 16
24035 Curno (BG) Italy
Tel: 011/39/035/461444
Fax: 011/39/035/461671
E-mail: info@losma.it
www.losma.it

U.S. Contact:
LOSMA INC.
231 West Parkway
Pompton Plains, NJ 07444
Tel: 973/248-0070
Fax: 973/248-3280
E-mail: info@losmausa.com
Contact: Charles Taylor

Booth: D-4690
Lakeside Center



Losma was founded in 1974 with a focused company mission: to operate in the field of Indoor Air Quality, Plant Safety and Manufacturing Quality by engineering and producing systems for the treatment of air and the filtration of coolants in the machine tool sector. The company is headquartered in Bergamo, Italy and covers a surface of about 17.000 sq.m. over 5.000 of which is occupied area.

Losma is a young and dynamic company. It employs 50 people, whose average age is 35. 40% are employed in production, 20% in the technical and R&D sector, 30% in the commercial department and 10% in administration.

Since 1992, Losma has been operating directly in the USA through the branch Losma Inc located in New Jersey. In order to enter the US and North American market, Losma has recently implemented an independent, qualified and quick after-sales service program together with a quick shipment spare-parts warehouse.

The DARWIN series represents the evolution of mist collection technology in the machine tool industry, demonstrated by the international patents on its innovative components. Right from the launch of the first products, the DARWIN proved to be the prime choice for resolving all problems of oil mist filtration.

The series was conceived and designed for multiple applications, and has a throughput range of 350 cfm to 1750 cfm from 4 models. This means that it can manage widely differing applications, from small lathes to grinding machines or complex machining centers.



The DARWIN series is characterized by:

- compact design and flexibility.
- easy installation and maintenance.
- unequalled versatility in use.
- maximum performance at a moderate price.



Mandelli Sistemi SpA (Gruppo Riello Sistemi)

Via Caorsana, 35
29100 Piacenza Italy
Tel: 011/39/0523/548548
Fax: 011/39/0523/617775
E-mail: mandelli.info@mandelli.com
www.mandelli.com

U.S. Contact:
Mandelli North America
420 E. Ohio Street, Suite 33D
Chicago, IL 60611
Tel: 312/951-1869
Fax: 312/951-1835
Contact: Mr. Michele Cavaioni

Booth: A-8586
South Building



Mandelli Sistemi SpA, located in Piacenza, was established in 1932. In over 70 years the company has constantly combined constructional skill and technologic innovation.

The company designs and manufactures 4 and 5 axis horizontal machining centers equipped with one of the widest ranges of machining heads and pallet tables available on the market.

The company offers capability of facing the most demanding production requirements with its modular concept machining centers and its long experience in producing integrated manufacturing systems together with a wide network of servicing facilities.

Consistent investments in research & development, highly qualified personnel - about 150 people, continuous training, a careful choice of the suppliers and top priority to quality are all aspects that lead to product reliability, accuracy and flexibility of Mandelli machining centers in over 40 countries.



FMS based on Mandelli Storm machines, equipped with a double level multipallet system.

Maspe Srl

Via Monte Fenera, 17
13018 Valduggia (VC) Italy
Tel: 011/39/0163/48084
Fax: 011/39/0163/48185
E-mail: mailbox@maspe.it
www.maspe.it

U.S. Contact:
Maspe USA Inc. (IMR Group)
4055 W. Parker Avenue
Chicago, IL 60639
Tel: 773/772-1907
Fax: 773/772-1908
E-mail: maspeinfo@imrusainc.com

Booth: A-8374

South Building



Our production consists of the following:

- Transfer machines with revolving or drum table, with horizontal or vertical axis, from 3 to 20 stations.
- CNC flexible transfer machines from 1 to 3 electric spindles HSK 63, with revolving clamps from 4° or 5° axis, hydraulic locking, tool magazine with automatic changing.
- Linear transfer machines.
- Diamond dressing machine for ball-valves.
- Hydraulic electro-mechanic quill machining units with recirculation ball screw coaxial to the spindle drive by brushless axis servomotor controlled by digital converter.
- Machine control by means of industrial PLC or digital CNC
- Tools and equipment design and construction
- Engineering for "turn-key" supply of complete machining cycle.

Flexible transfer machine type TRO6NC for the production of medium batches parts requiring machining from 3 orthogonal sides. Horizontal axis rotary table with 6 divisions; F4.160.NC ISO 40 DIN 2079 operating units, stroke 150 mm., feed by means of quill with RDS coaxial screw. Quick release tool holder automatic unlocking/locking. Set-up times by 15 minutes to 2 hours.



Molemab SpA

Via Provinciale, 10
25050 Ome (BS) Italy
Tel: 011/39/030/6859888
Fax: 011/39/030/652010
E-mail: molemab@molemab.it
www.molemab.it

U.S. Contact:
Molemab Abrasives USA
91 Carey Road
Queensbury, New York 12804
Tel: 800/962-2226
Fax: 888/203-3876
E-mail: sales@molemab.com
www.molemab.com
Contact: Mrs. Heather Jones

Booth: B-7237

North Building



Molemab is a leading manufacturer of a wide range of high quality abrasive products: vitrified, resinoid and rubber bonded grinding wheels, vitrified and resinoid bonded diamond and CBN wheels, segments, honing and superfinishing stones, mounted wheels, cutting and grinding discs, diamond dressing tools, flap discs and wheels.



Vitrified bonded Diamond and CBN wheels manufactured by Molemab

PAMA SpA

V.le del Lavoro, 10
38068 Rovereto Italy
Tel: 011/39/0464/455511
Fax: 011/39/0464/438609
E-mail: info@pama.it
www.pama.it

U.S. Office:
PAMA INC.
1090 Ingram Road
Rockford, IL 61108
Tel: 866/PAMAINC
Fax: 877/PAMAINC
E-mail: pamainc@pama.it

Booth: A-8721

South Building



*Speedmat, Table type
Boring and Milling
Machining Center with
spindle diameter from 4.3"
up to 6.3" and pallet size
up to 79"x79"*



Pietro Carnaghi SpA

Via S. D'Aquisto, 7
20020 Villa Cortese (MI) Italy
Tel: 011/39/0331/434700
Fax: 011/39/0331/434703
E-mail: pietrocarnaghi@pietrocarnaghi.it
www.pietrocarnaghi.it

Booth: A-8042

**South Building
c/o IMTA, Inc.**



Pietro Carnaghi was founded in 1922, and from the beginning demonstrated innovation in bringing technology and ideas to realization.

Pietro Carnaghi's production range is:

- vertical lathes (table turning diameter 800-13000 mm); inches: 31.5 - 512
- movable portals milling machines (gantry type) (table width 2000-8000 mm); inches: 78.7- 315
- vertical grinding machines (table diameter 800-8000 mm); inches: 31.5 - 315

Pietro Carnaghi S.p.A. exports 95% of its production. Its main customers are located in Europe, USA, Russia and the Far East.

Current markets for the applications are:

- Energy - power stations and turbines
- Aerospace - civil rockets
- Jet Engine
- General mechanics

*Vertical lathe AP80TM with milling
capability: table diameter mm 8000,
turning height mm 6500*



Riello Sistemi SpA

Via Nazionale, 10
37046 Minerbe (VR) Italy
Tel: 011/39/0442/641800
Fax: 011/39/0442/641919
Email: market@riellosistemi.it
www.riellosistemi.it

U.S. Contact:
Riello Machine Tools USA Corp.
420 E. Ohio Street, Suite 33D
Chicago, IL 60611 - USA
Tel: 312/951-1270
Fax: 312/951-1835
Contact: Mr. Stefano Baron

Booth: A-8586

South Building



Riello Sistemi S.p.A., established in 1963, is a fully integrated producer of specially designed machining solutions that range from rotary transfer machines and Flexible Manufacturing Cells/Systems to more complex turn-key systems used around the world for producing automotive components, sanitary fittings, hydraulic and pneumatic fittings and valves. In its 135,000 square feet plant in Italy Riello Sistemi employs 150 enthusiastic and motivated associates committed to excellence.

Riello Sistemi owes its development to the efforts made in terms of quality and innovation over the last 40 years and to the importance attached to human resources, thanks to which the company has had the possibility of competing in the global market.

An average of 80% of Riello Production is exported all over the world, and more than 25% of 2003 total production was sold in the USA.

Vertiflex is a FMC used to machine small to medium volume of parts within a 450 mm cube. It is capable of machining 5 sides in one chucking to assure high quality finished parts, very short cycle times and reduced cost per part.



SAFOP SpA

Corso Lino Zanussi, 55
33080 Porcia (PN) Italy
Tel: 011/39/0434/597711
Fax: 011/39/0434/922583 Sales Dept.
E-mail: safop@safop.com
www.safop.com

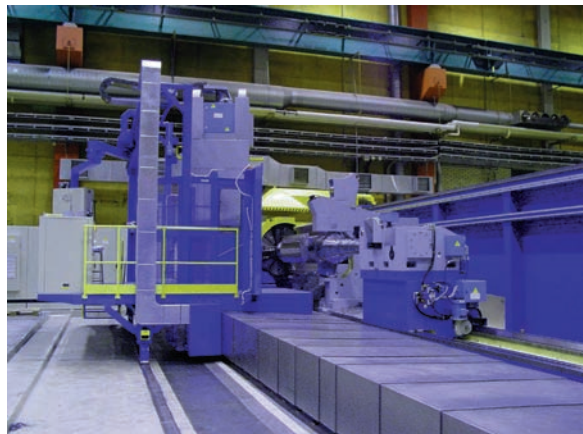
Booth: A-8487

South Building



SAFOP's production lines are addressed to the following sectors: steel industries, paper industries, energy, ordinance Industry, heavy duty mechanical manufacturing and transport.

Safop Company has been operating in the machine tools sector since 1923. The high experience accumulated by SAFOP during these 80 years is at the disposal of its customers. Together with a wide range of medium-large heavy duty CNC lathes, SAFOP's production consists also of special purpose machine tools on which different machining operations can be performed such as boring, milling, external/internal grinding and deep hole drilling.



Saporiti Srl

Via Patrioti, 58
21058 Solbiate Olona (VA) Italy
Tel: 011/39/0331/649196
Fax: 011/39/0331/643136
E-mail: saporiti@saporiti.it
www.saporiti.it

Booth: A-8281

South Building



UCIMU-SISTEMI PER PRODURRE
MEMBER COMPANY

Saporiti Srl has been producing machine tools since 1946.

Production includes:

- Ball Valve Grinding Machines
- CNC Milling/Whirling machines for manufacturing cylindrical or conical plasticizing screws, conveying screws and pump rotors
- CNC Deep Hole Drilling/Boring/Honing machines for cylindrical or conical single and twin barrels, also available with internal profiling
- Special CNC Lathes

*"SAPORITI PV 500"
Ball valve grinding machine*



Sertom M.M. SpA

Via Enrico Mattei, 16/b
25060 Collebeato (BS) Italy
Tel: 011/39/030/2511234
Fax: 011/39/030/2511562
E-mail: info@sertom.it
www.sertom.it

**Our Exclusive Agent
for North America:
CIMID CORPORATION
www.cimid.com**



UCIMU-SISTEMI PER PRODURRE
MEMBER COMPANY

Sertom productions:

- 3 rolls bending machine model EMO with variable axis
- 3 rolls bending machine model ECO
- 4 rolls bending machine model RIMI
- 4 rolls bending machine model BULL
- Section bending machines model PP
- Special vertical plant
- Bevelling machine model C25
- Special Plants for the production of spiral tubes

*EMO 36-180. The biggest
bending machine built in the
last 23 years by an Italian
manufacturer.*



Booth Location Key:

- A - South Building**
- B - North Building**
- C - North Building**
- D - Lakeside Center**
- E - Lakeside Center**

ABRASIVE MACHINING/SAWING/ FINISHING PAVILION

CUOGHI AFFILIATRICI Srl Booth: B-6546
U.S. Contact: Novatech, Inc.
Tel: 480/991-9591
www.novatechonline.com

BUSINARO Snc Booth: B-7131
U.S. Contact: Colonial Saw Company, Inc.
Tel: 781/585-4364
www.csaw.com

DAN DI DE ANTONI Srl Booth: B-7144
U.S. Contact: Abrasit
Tel: 404/816-5045
www.abrasit.com

F.M.B. Srl Booth: B-6950
U.S. Contact: Pat Mooney, Inc.
Tel: 630/543-6222
www.patmooneysaws.com

GAMFIOR Spa Booth: B-7121
U.S. Contact: GTI Technologies, Inc.
Tel: 203/929-2200
www.gitechnologies.com

GHIRINGHELLI Spa Booth: B-7550
U.S. Contact: I-TECH Corp.
Grinding Solutions
Tel: 973/248-0099
www.itech.co.it

GIORIA Spa Booth: B-7121
U.S. Contact: GTI Technologies, Inc.
Tel: 203/929-2200
www.gitechnologies.com

MECCANICA NOVA Spa Booth: B-7442
U.S. Contact: Meccanica Nova Corporation
Tel: 248/449-4000
www.novagrinders.com

MECCANODORA Spa Booth: B-7121
U.S. Contact: GTI Technologies, Inc.
Tel: 203/929-2200
www.gitechnologies.com

MELCHIORRE Srl Booth: B-7236
www.melchiorre.net

MVM Srl Booth: B-7131
U.S. Contact: Colonial Saw Company, Inc.
Tel: 781/585-4364
www.csaw.com

ORT ITALIA Spa Booth: B-7550
U.S. Contact: I-TECH Corp. Grinding
Solutions
Tel: 973/248-0099
www.itech.co.it

ROSA ERMANDO Spa Booth: B-7550
U.S. Contact: I-TECH Corp. Grinding
Solutions
Tel: 973/248-0099
www.itech.co.it

SAID Spa Booth: B-6746
U.S. Contact: SAID, Inc.
Tel: 734/522-0333
www.saidtools.com

SILLEM Spa Booth: B-7053
U.S. Contact: GPB Distributing, Inc.
Tel: 716/247-5289
www.gpbdistributing.com

**TACCHELLA MACCHINE Spa
Booth: B-7550**
U.S. Contact: I-TECH Corp. Grinding
Solutions
Tel: 973/248-0099
www.itech.co.it

TECNOLOGIE FRB Spa Booth: B-7550
U.S. Contact: I-TECH Corp. Grinding
Solutions
Tel: 973/248-0099
www.itech.co.it

EDM PAVILION

T.F.E. Srl Booth: D-4028
www.tfesrl.com

FLUID POWER PAVILION

DROPSA Spa Booth: D-4070
U.S. Contact: Dropsa USA, Inc.
Tel: 586/566-1540
www.dropsausa.com

GEAR GENERATION PAVILION

SAMPUTENSILI Spa Booth: B-6912
U.S. Contact: SU America, Inc.
Tel: 847/649-1450
www.samputensili.it

MACHINE COMPONENTS/CLEANING/ ENVIRONMENTAL PAVILION

**COLOMBO GIORDANO
ELETTROMECCANICA Srl Booth: D-4150**
U.S. Contact: Precision Drive Systems
Tel: 704/922-5261
www.pdscolombo.com

**DUPLOMATIC AUTOMAZIONE Spa
Booth: D-4694**
www.duplomatic.com

GRAFOPLAST Spa Booth: D-4761
U.S. Contact: Grafoplast Wiremarkers, Inc.
Tel: 847/649-1450
www.grafoplast.com

METAL CUTTING PAVILION

A. BERGONZI Spa Booth: A-8467
U.S. Contact: Willis Machinery
& Tools Co., Inc.
Tel: 419/537-1717
www.willismachinery.com

ALBERTI UMBERTO Booth: A-8370
U.S. Contact: Koma Precision, Inc.
Tel: 860/627-7059
www.komaprecision.com

BRETON Spa Booth: A-8389
www.breton.it

BUFFOLI TRANSFER Spa Booth: A-8664
U.S. Contact: Buffoli North America
Tel: 262/246-6110
www.buffoli.com

EL.MEC Srl Booth: A-8001
U.S. Contact: Nailati Machines LLC
Tel: 860/413-9194
www.nailatimachines.com

FIDIA Spa Booth: A-8779
U.S. Contact: Fidia Co.
Tel: 847/649-1445
www.fidia.com

**GILDEMEISTER ITALIANA Spa
Booth: A-8501**
U.S. Contact: DMG America, Inc.
Tel: 847/781-0277
www.dmgamerica.com

GNUTTI TRANSFER Srl Booth: A-8318
U.S. Contact: Kaufman Mfg. Co.
Tel: 920/684-6641
www.kaufmanmfg.com

**GRAZIANO TORTONA Spa
Booth: A-8501**
U.S. Contact: DMG America, Inc.
Tel: 847/781-0277
www.dmgamerica.com

IEMCA Booth: A-8127
U.S. Contact: IEMCA, Inc.
Tel: 314/692-8388
www.iemcausa.com

INNSE-BERARDI Spa Booth: A-8042
U.S. Contact: IMTA, Inc.
Tel: 815/987-6000
www.imtainc.com

JOBS Spa Booth: A-8632
U.S. Contact: Jobs, Inc.
Tel: 810/714-0522
www.jobs.it

MECOF Spa Booth: A-8394
www.mecofspa.com

**OFFICINA MECCANICA FAVRETTO Spa
Booth: A-8517**
U.S. Contact: Rem Sales Inc.
Tel: 860/653-0071
www.remsales.com

PARPAS Spa Booth: A-8160
U.S. Contact: Parpas America Corp.
Tel: 734/462-0204
www.parpasamerica.com

PICCHI TRANSFER Srl Booth: A-8001
U.S. Contact: Nailati Machines LLC
Tel: 860/413-9194
www.nailatimachines.com

PIETRO CUCCHI Spa Booth: A-8267
U.S. Contact: Pietro Cucchi America, Inc.
Tel: 847/718-1818
www.pietrocucchi.com

PORTA Spa Booth: A-8496
U.S. Contact: Porta North America, Inc.
Tel: 860/665-9996
www.portatransfer.com

PROTEO Srl Booth: A-8388
U.S. Contact: Global Precision Machining
Associates
Tel: 845-494-8221

RAMBAUDI INDUSTRIALE Spa Booth: A-8042
U.S. Contact: IMTA, Inc.
Tel: 815/987-6000
www.imtainc.com

SACHMAN Spa Booth: A-8042
U.S. Contact: IMTA
Tel: 815/987-6000
www.sachman.it

**TACCHI GIACOMO & FIGLI Spa
Booth: A-8577**
U.S. Contact: Tacchi USA, Inc.
Tel: 815/624-8005
www.tacchiusa.com

**TREVISAN MACCHINE UTENSILI Spa
Booth: A-8002**
U.S. Contact: Trevisan USA, LLC
Tel: 860/653-0521
www.trevisanusa.com

METAL FORMING & FABRICATING/LASERS PAVILION

CML INTERNATIONAL Spa Booth: B-6324
U.S. Contact: CML USA Inc. (Ercolina)
Tel: 563/391-7700
www.ercolina-usa.com

FIM Spa Booth: B-6409
U.S. Contact: Heck Industries, Inc.
Tel: 810/632-5400
www.heckind.net

IMAC ITALIA Srl Booth: B-6355
U.S. Contact: Comeq Inc.
Tel: 410/933-8500
www.comeq.com

LASERVALL Spa Booth: B-6151
U.S. Contact: Laservall North America
Tel: 401/724-0076
www.laservall-usa.com

**NOVA SIDERA METAL FORMING Srl
Booth: B-6612**
U.S. Contact: SuperSpin Inc.
Tel: 305/252-7778
www.superspin.com

OMCG Spa Booth: B-6313
U.S. Contact: OMCG North America
Tel: 203/567-6948, 630/860-1016
www.omcg.com

O.M.P. Srl Booth: B-6044
U.S. Contact: Dake-JSJ Corporation
Tel: 800/937-3253
www.dakecorp.com

S.I.C.M.I. Srl Booth: B-6044
U.S. Contact: Dake-JSJ Corporation
Tel: 800/937-3253
www.dakecorp.com

THOMAS Spa Booth: B-6044
U.S. Contact: Dake-JSJ Corporation
Tel: 800/937-3253
www.dakecorp.com

T.I.M.A.C. Srl Booth: B-6612
U.S. Contact: SuperSpin Inc.
Tel: 305/252-7778
www.superspin.com

QUALITY ASSURANCE PAVILION

CEMB Spa Booth: D-4446
U.S. Contact: VibraSys, Inc.
Tel: 631/643-5529
www.vibrasys.com

COLOMBO FILIPPETTI Spa Booth: D-4641
U.S. Contact: Indexing Technologies Inc.
Tel: 201/934-6333
www.indexingtechnologies.com

DEA Spa Booth: D-4303
U.S. Contact: Brown & Sharpe
Tel: 401/886-2000
www.brownsandsharpe.com

FAEMAT Srl Booth: D-4641
U.S. Contact: Indexing Technologies Inc.
Tel: 201/934-6333
www.indexingtechnologies.com

MARPOSS ITALIA Spa Booth: D-4514
U.S. Contact: Marpos Corporation
Tel: 248/370-0404
www.us.marpos.com

ROTOMORS Spa Booth: D-4641
U.S. Contact: Indexing Technologies Inc.
Tel: 201/934-6333
www.indexingtechnologies.com

TOOLING & WORKHOLDING SYSTEMS PAVILION

AUTOBLOK Spa Booth: E-2207
U.S. Contact: SMW Autoblok Corporation
Tel: 847-215-0591
www.smwautoblok.com

ELBO CONTROLLI Srl Booth: E-2139
U.S. Contact: Lyndex-Nikken Inc.
Tel: 847/509-2900
www.lyndex.com

GERARDI Spa Booth: E-2634
U.S. Contact: Gerardi USA
Tel: 847/515-3234
www.gerardispa.com

**ITALMORS DI ZULIANI MAURIZIO & C. Snc
Booth: E-2761**
U.S. Contact: PowerHold Incorporated
Tel: 860/349-1044
www.powerholdinc.com

SPERONI Spa Booth: E-2005
U.S. Contact: Big Kaiser Precision Tooling Inc.
Tel: 800/222-7660
www.toolpresettlers.com/stp.htm

TECNOMAGNETE Spa Booth: E-2886
U.S. Contact: Tecnomagnete Inc.
Tel: 586/276-6001
www.tecnomagnete.com

TECNOMORS Spa Booth: E-2006
U.S. Contact: Kitagawa / NorthTech Workholding, Inc.
Tel: 800/222-4138
www.kitagawa.com

WOLFRAMCARB Spa Booth: E-2386
U.S. Contact: Wolframcarb USA
Tel: 954/441-2440
www.wolframcarb.com



See the latest in
Italian machine tool
technology

@ **IMTS**
chicago2004

September 8-15
McCormick Place

Italy brings a 500-year heritage of creativity and innovation to the metalworking industry. When you buy our machinery, you're entering a partnership with the world's most highly skilled designers, engineers and manufacturers. The result is a smarter approach that combines sophisticated technology, flexible solutions and responsive customer service to meet your specialized needs and guarantee greater efficiencies on your production line and your bottom line. Not surprisingly, Italy has earned a reputation as a world-class supplier of metalworking equipment to a wide range of companies. So, whatever you make, Italian machinery will make it better.

To receive complimentary **Best Practices Business Guides and to learn how we can work together call 888-ITALTRADE (482-5872) or visit us at www.machinesitalia.org.**



Italian Trade Commission
Government Agency

401 N. Michigan Avenue, Suite 3030
Chicago, IL 60611
Tel: 312.670 4360
Fax: 312.670 5147
E-mail: info@italtradeusa.com
www.italtrade.com/usa
www.italianmachinetools.com



UCIMU - SISTEMI PER PRODURRE

**Italian Machine Tools, Robots and
Automation Manufacturers' Association**

Viale Fulvio Testi 128
20092 Cinisello Balsamo (MI), Italy
Tel: 011/39/02/262 551
Fax: 011/39/02/26255 214/349
E-mail: ucimu@ucimu.it
www.ucimu.it